

Quick Start Guide – Simplify Printing for VDI

Purpose

This document is intended to give the reader a quick start to installing Simplify Printing for Virtual Desktops. It covers installation, and configuration. It is not intended to be used a full documentation for the product, for that refer to <http://www.tricerat.com/dochelp.php>

Pre-requisites

SQL Server

- Simplify Printing requires a SQL server backend database. It can be MSDE, SQL Express 2005/2008, or SQL 2000/2005/2008.

Virtual Desktop Infrastructure

- The VDI can consist of any Hypervisor, Virtual Machine Host OS, and Connection Broker.
- The Simplify Suite is installed directly on the virtual machine. Windows XP, Vista, and 7 are acceptable virtual machine operating systems.
- Generally the Simplify Suite needs to be installed only once, on the 'Golden Image'.
- Network access on specific port to print server (default is TCP 3550)

Print Server

- The print server needs to be Windows 2000, XP, Vista workstation or Windows 2000, 2003, 2008 server.
- The print server needs to have printers installed and connected. (printers may not be pointing to other print servers, and if they are, that print server should have the agent installed).
- Network access on specific port to virtual machines(s) (default is TCP 3550).

Client (Optional)

- If you want to use client printers too, then the ScrewDrivers Client needs to be installed on each Windows client.
- These are found in the ScrewDrivers Client directory and on the triCerat website:
<http://www.tricerat.com/clidown.php>

Download Components

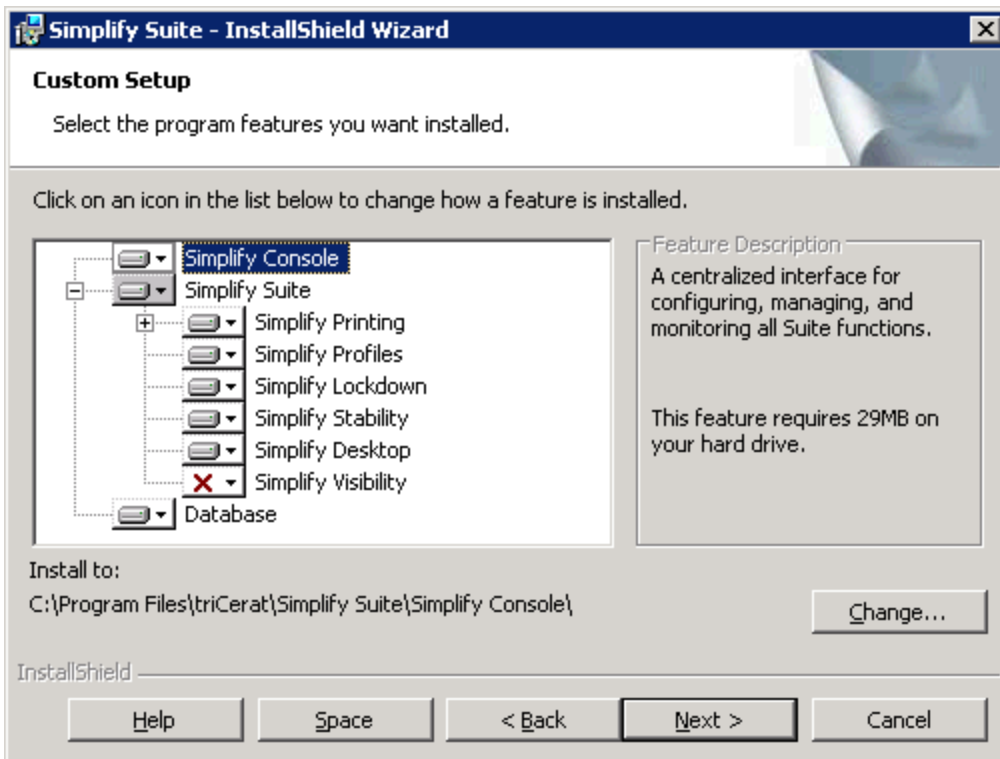
The Simplify.zip contains the following files:

SimplifySuite.exe	The Simplify Suite (Printing) is installed on virtual machines. It is recommended to install this on the Master Image/Golden Image.
README FIRST.txt	This text file explains the Simplify Suite pre-requisites.
Installing SQL Express for Simplify Suite.doc	Directions to install SQL Express. Not required if you already have a SQL server.
ScrewDrivers v4 Print Server Agent.msi	This agent needs to be installed on every Windows Print Server that you want to include in your configuration.
ScrewDrivers Client v4.msi	ScrewDrivers client for RDP and/or ICA. This is installed on the Windows clients for local printer mapping.
ScrewDrivers Client v4 x64 (rdp only).msi	ScrewDrivers client for RDP x64 (not for ICA). This is installed on the Windows clients for local printer mapping.

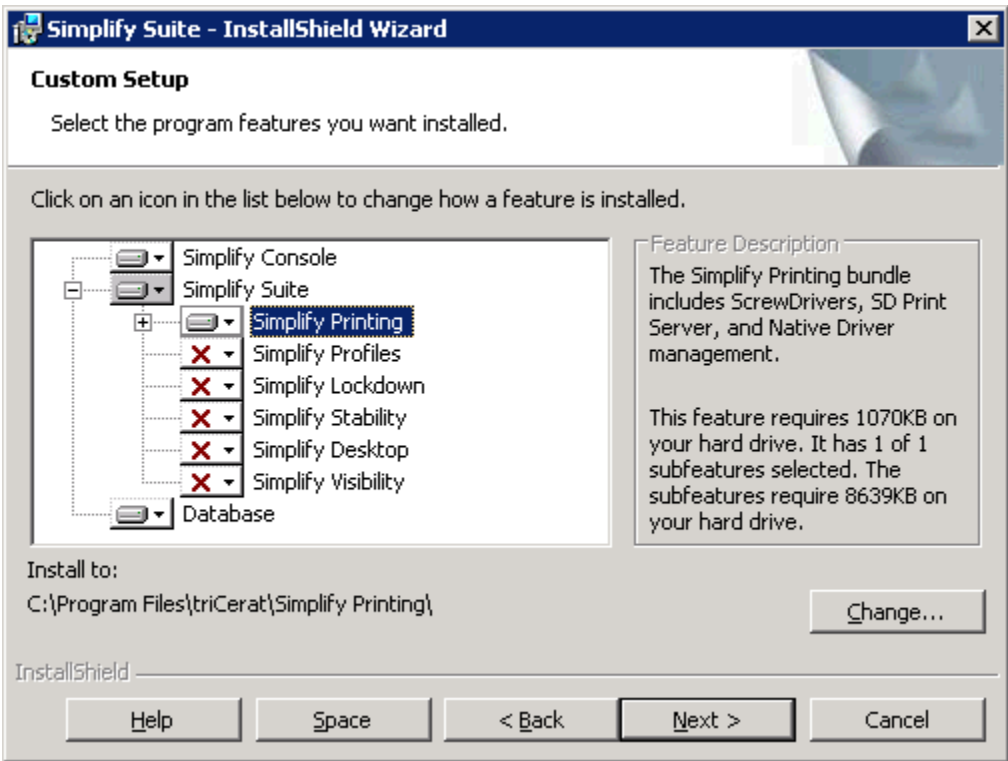
Installation on Virtual Machines

Start by making a copy of the 'Golden Image' and setting the virtual machine to persistent mode. After you finalize the Simplify Suite configuration on the virtual machine, it will become the new 'Golden Image' for the VDI.

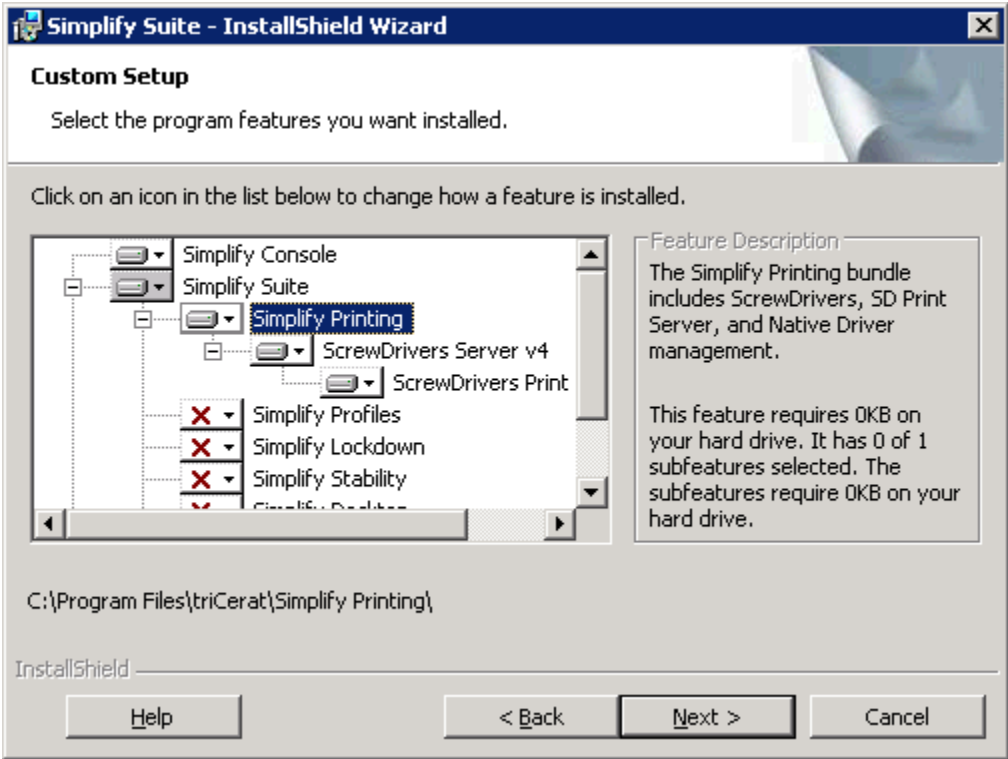
Run SimplifySuite.exe, client Next until you reach the screen below:



Customize the installer to your specifications. The example below is for Simplify Printing:



As you can see, Simplify Printing includes subcomponents. It is recommended to include all subcomponents for Simplify Printing.

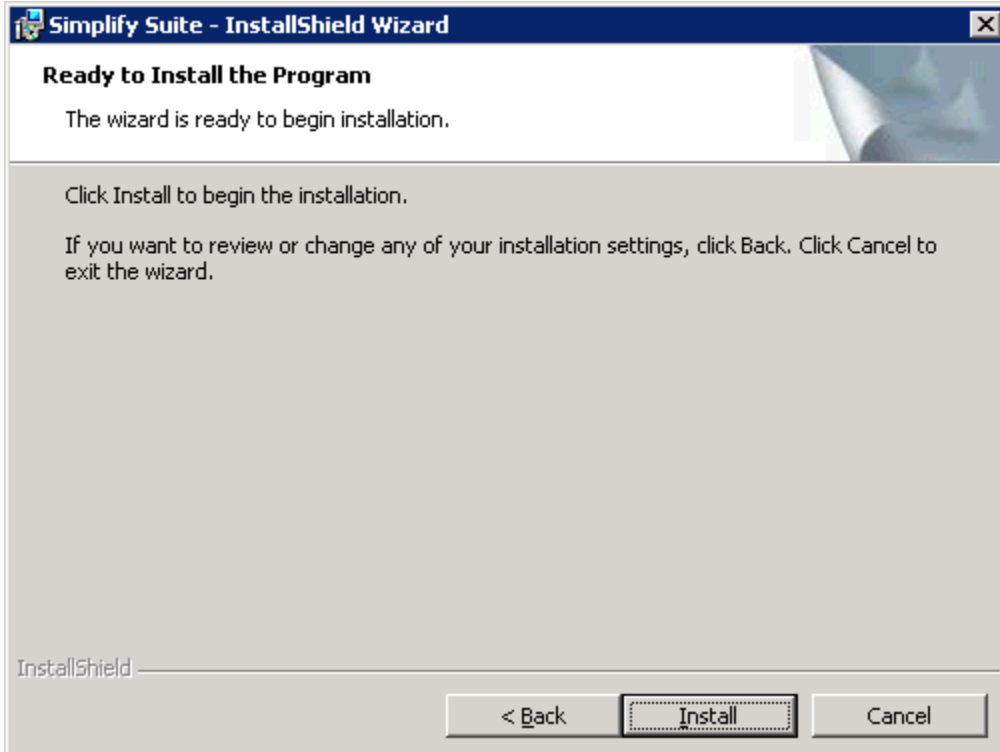


Then you click next, you will be asked to select a database server, if you have a SQL server, type in the name of the server or browse to the server. We recommend you to use Server Authentication. For the first server install, user sa account if possible to create the database. You can then create a new account on the SQL server that is db_owner of

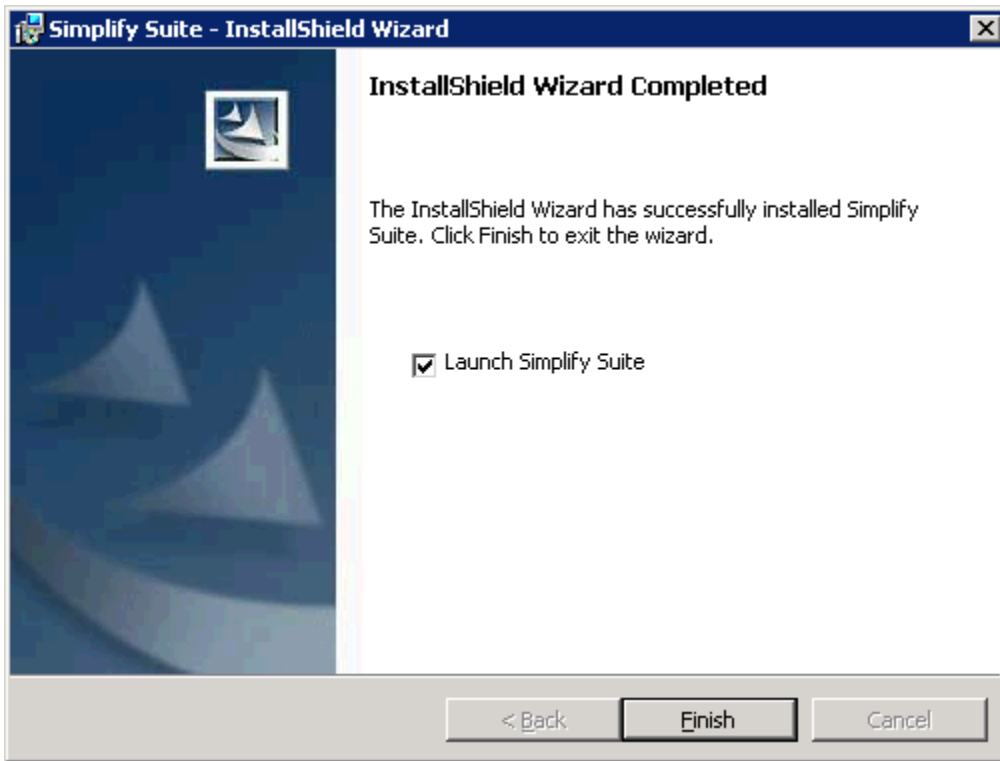
the database “Simplify” and change the account used by Simplify from “Manage Data Sources” found on the file menu in Simplify Console.



If you provide a correct user name and password you will get the following screen:



The software will then be installed, and you will get a screen displaying that the install finished. You can either continue by managing the Simplify Console from the virtual machine, or you can install the Simplify Console on a separate computer to manage the software remotely.



Installation on Print Server

Login to Print Server, and run the ScrewDrivers v4 Print Server Agent.msi installer.

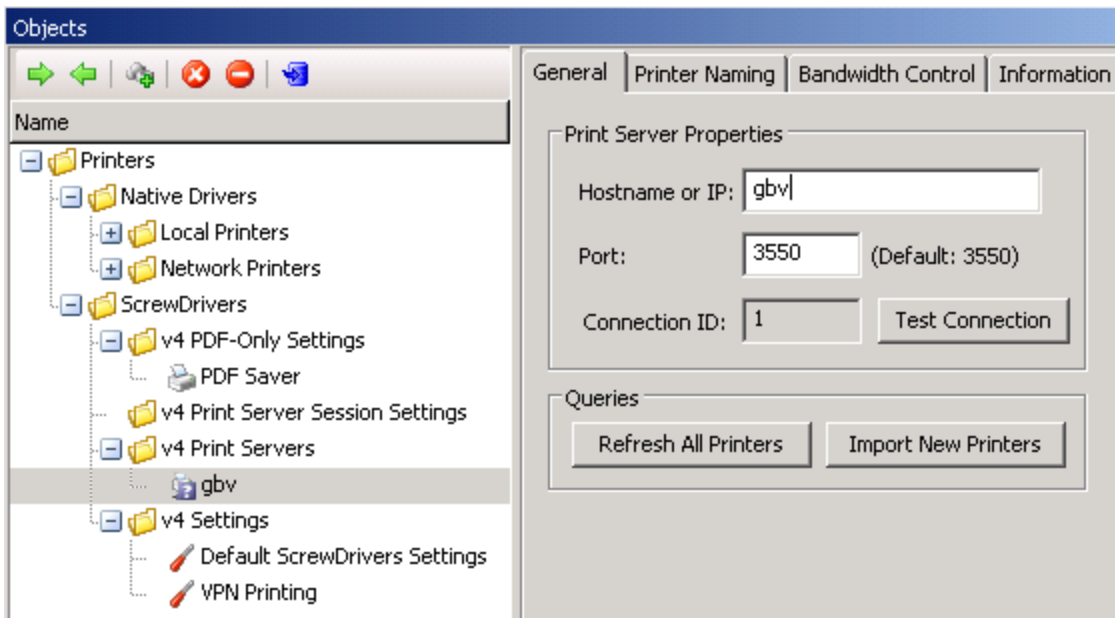
Once you have installed this package, you will have a new service named: ScrewDrivers v4 Print Server. This service accepts and processes print data from the virtual desktops with Simplify Printing.

Record the IP address or hostname of the print server, to be used later.

Creating Print Server Object

Start the Simplify Console. By default, it can be found in the Start Menu or Program Files\triCerat\Simplify Suite\Simplify Console\SimplifyConsole.exe

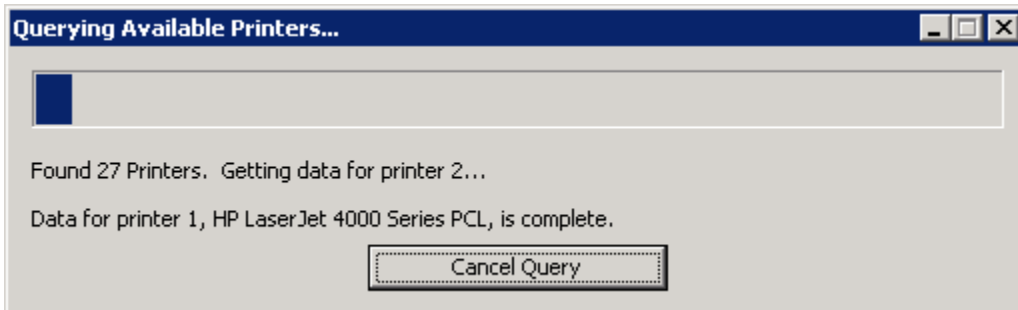
In the Objects pane, select v4 Print Servers, and right click and select New Object, and type in a name for the new object. It's recommended to use the print server's hostname for the object's name.



You must now complete the object's configuration. Type in the Hostname or IP in the field.

Click Test connection to verify the ScrewDrivers v4 Print Server communication. Upon success, click Import New Printers

You will see a dialog with connection to Print Server, gathering a list of printers and features. Let the Import New Printers complete. This process locks up the Simplify Console until it's complete. It may give the impression that Simplify Console crashed, but it's working.



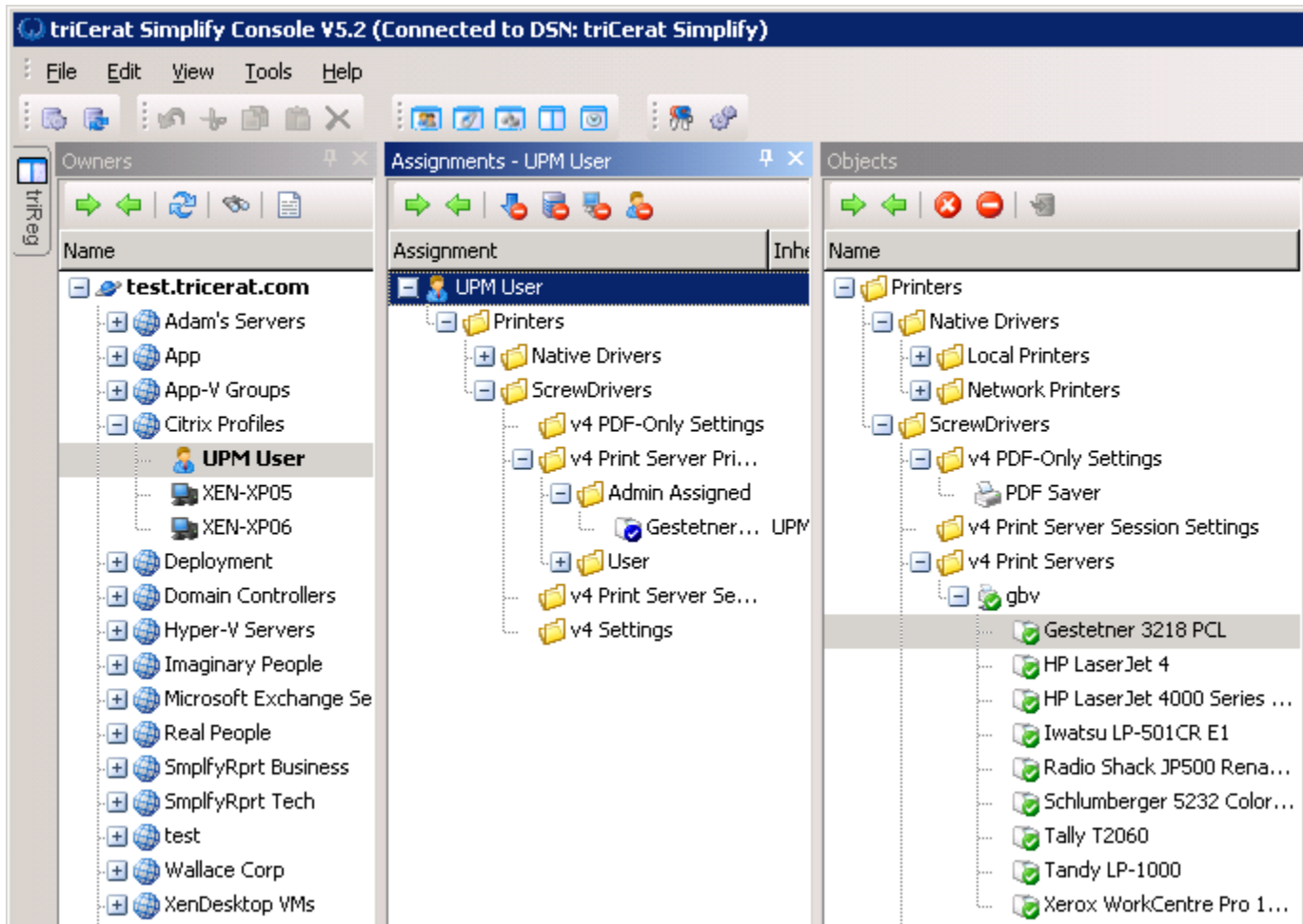
After the query completes, you are ready to assign the printers.

Assigning Print Server Printers to owner

When you have a list of printers in under the v4 Print Server object, you are ready to assign printers to your users.

To assign the printer, you must first select the owner (user, group, OU, etc).

Once you have selected the owner, just drag and drop the printer from the Objects pane to Assignments pane. The print server printer object should be placed under v4 Print Server Printers > Admin Assigned.



The above setting will create the Gestetner printer when the UPM User connects to the Simplify Printing server.

The Default Printer can be assigned by right-clicking the Assigned printer and selecting “Set the printer as default”

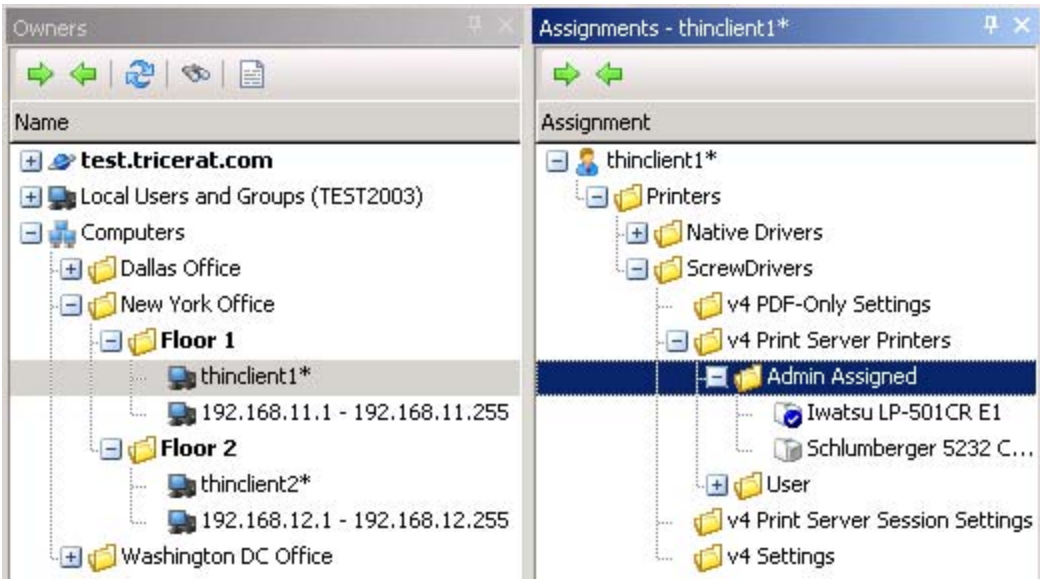
The Default Printer is always flagged with a blue checkmark in the Simplify Console.

For information on “User Assigned” and “User Allowed” printers please refer to this document:

http://www.tricerat.com/support/Simplify%20Suite/User_Assigned_Printers.html

Assigning printers based on client location (Proximity Printing)

Simplify Printing includes the ability to dynamically assign printers based on where the user is logging in from, based on IP address or client hostname. If you have many locations, you may also want to create a “group” to organize the IP addresses and hostnames. The group can be something that makes sense to you (building, location, country, etc) rather than referring directly to IP addresses and hostnames (see the example below).



Client Based Printers

If you wish to allow users to use locally installed printers from their workstations then they will need to have the ScrewDrivers client installed on their workstation.

You also need to create and assign a ScrewDrivers v4 Setting object to the user(s). In the example below, the SDv4 Build All is assigned to the domain.

